

Using 10EaZy with Dolby Lake controller software

Summary:

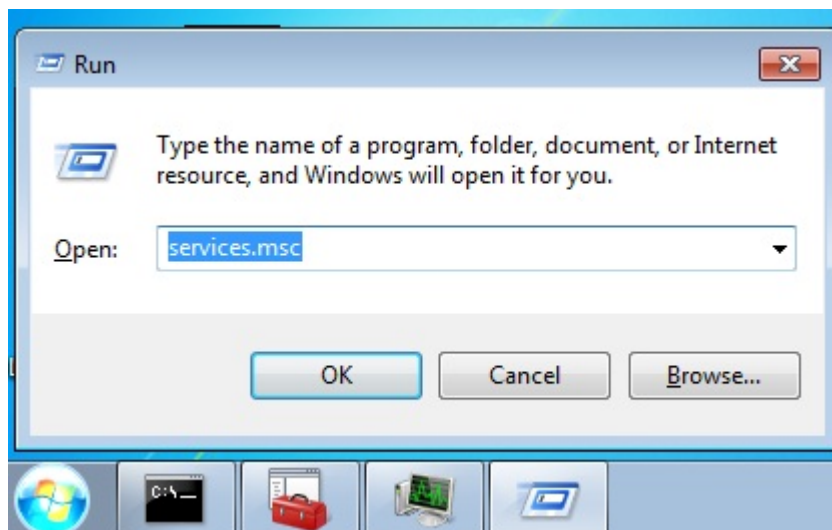
Users of Dolby Lake have experienced that the Lake Controller software stopped working after installing 10EaZy on the same computer. This document describes how to disable services in windows that is blocking the Lake controller software from starting, and at the same time render the machine capable of running 10EaZy at the same time..

The problem with Lake Controller software not starting is due to a number of services that are installed with the run time engine that is executed with the launch of 10EaZy. These services blocks the ports used by the Lake Controller software.

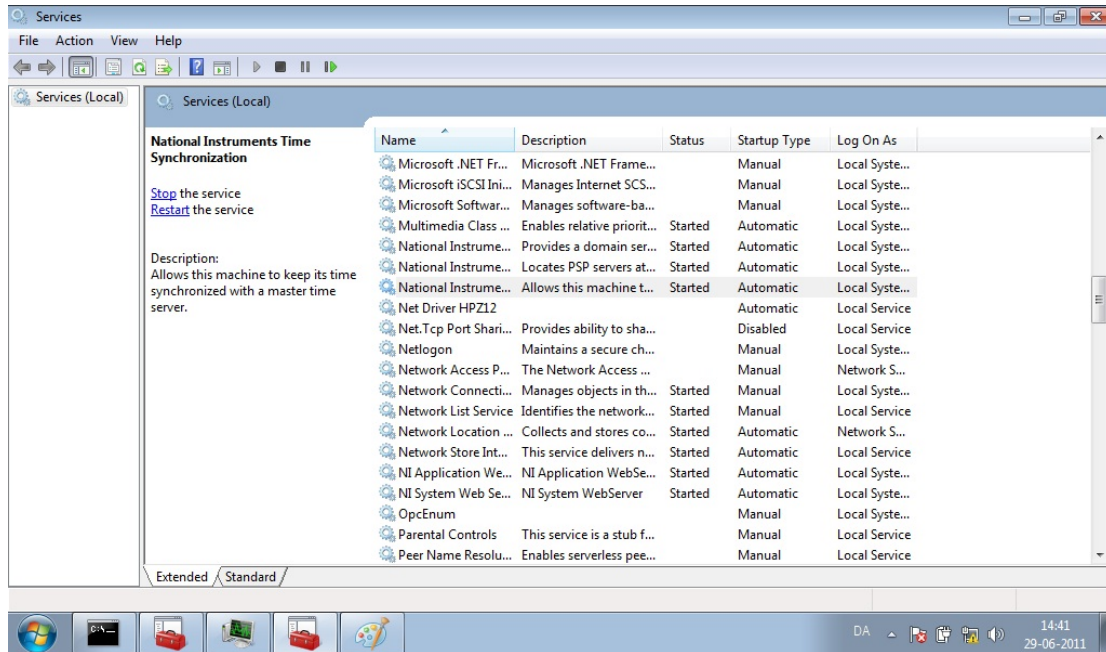
In order to have both programs running on the same machine, you will need to disable two services from National Instruments, the providers of the 10EaZy Run Time Engine. Please follow the steps below.

Disclaimer: Starting and stopping services may render your computer unable to start, run programs or a number of other problems. You should only proceed with this guide if you are familiar with the more advanced workings of Windows computers. Proceed with this guide at your own risk!

Start by pressing “windows + r” to open the run command, and type *services.msc*



Once the dialog a list of all windows services will be displayed, looking something similar to this



You will need to locate services from from National Instruments, so please scroll the dialog until the three National services are displayed.

They should look like this:

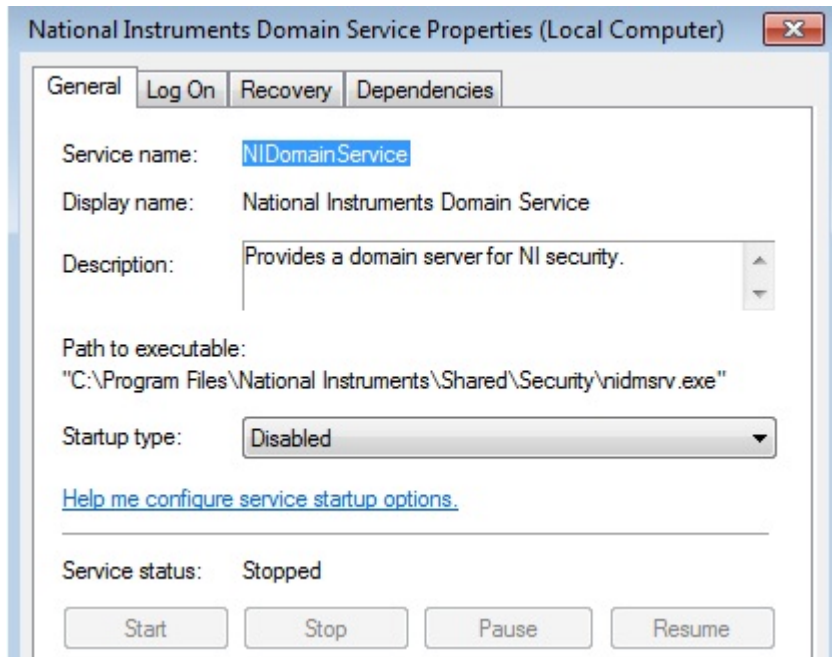
National Instrume...	Provides a domain ser...	Started	Automatic	Local System...
National Instrume...	Locates PSP servers at...	Started	Automatic	Local System...
National Instrume...	Allows this machine t...	Started	Automatic	Local System...

You will notice that the three services are “started” and we need to change that. It is possible to “stop” a services but this will only work for this run of windows, as soon as you restart the service will be back on – therefore it is necessary to disable the services completely.

You need to disable the two services called “National Instruments Domain Services” and “National Instruments Time Synchronization”

To do this please right click the respective services, select properties, and press the “stop” button, click apply.

While in the same dialog box please select the “disable” function from the dropdown menu in the middle of the dialog (labeled “Startup type”)



Perform this on both services and afterwards the main dialog should have changed from listing three services from National Instruments as “started” to just being one, and the other two should have no text in that column, but be listed as disabled in the next column

National Instruments Domain Service	Provides a domain ser...		Disabled
National Instruments PSP Server Locator	Locates PSP servers at...	Started	Automatic
National Instruments Time Synchronization	Allows this machine t...		Disabled

You should now be able to start the Lake controller software again, and at the same time perform measurements with 10EaZy