

# I0EaZy User Guide

Version 2.5  
October 2014



## Table of Contents

|  |           |
|--|-----------|
| <b>10EaZy – A word from the inventor .....</b>   | <b>3</b>  |
| <b>System requirements and installation .....</b>  | <b>4</b>  |
| <b>Setting up 10EaZy .....</b>   | <b>4</b>  |
| <b>Mounting the microphone .....</b>   | <b>5</b>  |
| <b>The Setup Screen .....</b>  | <b>7</b>  |
| User information .....   | 7         |
| Auto-start feature .....   | 7         |
| Leq limit setup (Locked when running 10EaZy DIN – Germany only) .....                    | 8         |
| Check for updates: .....   | 8         |
| Start in full screen: .....  | 8         |
| Press the “OPTIONS” tab to reveal additional features of 10EaZy .....                    | 9         |
| Actual available buttons will depend on your 10EaZy version .....                        | 9         |
| Recalibrate .....  | 9         |
| E-mail Setup .....   | 9         |
| “Compensation Setup” .....   | 10        |
| Running order (not available with 10EaZy RT and SW) .....                                | 10        |
| Record (not available with 10EaZy RT and SW) .....                                       | 10        |
| Edit Din15905 Setup .....  | 11        |
| Launch 10EaZy .....  | 11        |
| Auto-naming feature .....  | 11        |
| <b>The Setup Screen - Running order .....</b>  | <b>12</b> |
| <b>The Setup Screen – RTA option .....</b>   | <b>13</b> |
| (not available with 10EaZy RT and SW) .....  | 13        |
| <b>The Setup Screen - Network Tab .....</b>  | <b>15</b> |
| (not available with 10EaZy RT and SW) .....  | 15        |
| <b>10EaZy Main Screen .....</b>  | <b>17</b> |
| TOP ROW BUTTONS: .....   | 17        |
| Event log (not available with 10EaZy RT & SW) .....                                      | 17        |
| Running order (not available with 10EaZy RT & SW) .....                                  | 18        |
| History display .....  | 18        |
| The main display .....   | 18        |
| The MAM .....  | 18        |
| Extra Displays – monitoring alternative LAeq and LCeq limits: .....                      | 18        |
| The Leq area .....   | 19        |
| The Status Bar .....   | 19        |
| Input peaks: .....   | 19        |
| Quit 10EaZy .....  | 20        |
| <b>10EaZy Main Screen, The warning dialogs .....</b>                                     | <b>23</b> |
| <b>10EaZy Main Screen, Limitations .....</b>   | <b>24</b> |
| <b>10EaZy WebViewer and MobileViewer .....</b>   | <b>25</b> |
| Accessing the WebViewer on a local network (LAN) .....                                   | 25        |
| Accessing the WebViewer from an outside line .....                                       | 26        |
| WebViewer advanced notes .....   | 26        |
| <b>The 10EaZy LogFile .....</b>  | <b>28</b> |
| 10EaZy log File (not available with 10EaZy RT & SW) .....                                | 28        |
| 10EaZy RT & SW log file .....  | 28        |
| A note on ensuring valid measurement results (not available with 10EaZy RT and SW) ..... | 28        |
| A note on decimal points .....   | 29        |
| Backup of data: .....  | 29        |
| <b>Installing the 10EaZy sound card driver .....</b>                                     | <b>29</b> |
| <b>Calibrating 10EaZy .....</b>  | <b>30</b> |
| <b>Using the compensation setup .....</b>  | <b>32</b> |
| <b>Appendix: dB! A measurement primer .....</b>  | <b>34</b> |

## 10EaZy – A word from the inventor

We realize that you've made a choice to buy 10EaZy.

We wish to thank you for doing so, and hope that 10EaZy will provide you with years of simple and reliable measurements.

10EaZy was created as a response to my experiences as a touring sound engineer, meeting a lot of different dB limits and an equal amount of more or less user-friendly dB measurement devices and situations.

A lot of the dB limits are based around "Leq" measurements, typically with periods of 15 to 60 minutes.

To put it very simple, Leq values are just an average over time, meaning that it indicates the average sound level for a given period of time. A typical way of writing this could be LAeq 15min = 96 dB.

What this really means is that in the last 15 minutes the average sound pressure level has been 96 dBA.

Leq limits are great for mixing music, as they provide an option for variations in the level in accordance with the dynamic of the music.

However Leq limits also introduce a problem. When the dB value is based on an average of say 15 minutes, there is a sudden amount of inertia before changes in the instantaneous level is reflected in the Leq value.

If the sound level is increased, the average doesn't jump to this new value, but gradually grows towards it.

In the same way reducing the volume results in a gradual reduction of the Leq value.

The typical device measuring the average level at a concert does not provide any information to counter this fact and leaves the engineer guessing where he will end up - not because they are poorly made, but simply because they are designed to measure and document the noise emitted from factories, machines etc, and here it doesn't really matter what the value is as long as it is measured correctly. A sound engineer mixing at a concert with dB limits on the other hand do care about where the value will end as we need to ensure that artist we're mixing is presented with a sound level and fidelity that serves the genre right.

The way 10EaZy approaches this problem is to think of the Leq as a bank account.

The dB limit equals the zero on the bank account, which is never to be exceeded.

Every second an amount of "dB money" is put into the account. The rate, at which the money is inserted, equals the average sound level defined by the dB limit. When playing, an amount is withdrawn by the sound engineer / DJ at a rate equal to the average level he is playing at. Now there is nothing wrong in withdrawing faster than the insertion rate, i.e. play louder than the stated average, if it is only done for a limited amount of time. But to avoid exceeding the limit, the rate of withdrawal will then have to lower at some other point to compensate for this "dB money" overspending.

Using the "bank account" approach, 10EaZy presents a user interface to the person controlling the overall volume of an event with an instant overview of the current withdrawal rate plus a number of other useful information's, ensuring that everyone involved, from the engineer who has the hand on the fader to the local environmental officer, are in agreement of how loud this show is, and whether that is too loud or within the given limits. Peace of mind to everyone involved, and focus on mixing a good sounding show, instead of discussing sound levels, that is the main purpose of 10EaZy.

Jacob Navne, Inventor of 10EaZy and C.E.O of SGAudio Aps

## System requirements and installation

Minimum system requirements:

A PC running either XP or Windows 7 / 8 – the better the PC is performing the smoother 10EaZy will operate.

For generation-I hardware – the majority of which is sold prior to October 2010 we cannot guarantee the measurement accuracy on OS above Win XP. Please follow the steps described in the installer closely to ensure a proper setting of the windows control panel sliders. If your 10EaZy hardware is listed as a Windows sound card, then you have one of the generation-I cards and need to observe this. If your hardware is listed as a dedicated 10EaZy hardware in the device manager of windows, you have an up to date hardware, and accuracy is guaranteed across all existing Windows platforms from XP and onward.

Additionally you need - one available USB2.0 socket and a screen resolution of at least 1024 \* 600 pixels.

Depending on your screen resolution the user interface will have a slightly different layout, but all the features available will be the same.

Installing is as simple as double clicking the setup.exe file on the CD-rom or from the extracted zip file, depending on your preferred method of install.

**Please note!** To ensure a reliable performance it is highly recommended to use 10EaZy on a standalone PC dedicated to this task, and to not run other applications at the same time. If 10Eazy is having trouble getting samples fast enough from the sound card a warning dialog will appear. If the dialog keeps appearing please reduce the amount of non-10EaZy tasks.

### ***Setting up 10EaZy***

10EaZy is tied to the dedicated 10EaZy hardware and will only start if this sound card is properly connected.

10EaZy will locate the sound card automatically at program start.

If 10EaZy cannot find the sound card an error dialog will be displayed.

Please make sure that the sound card is connected to an USB2.0 port, and that the driver installation has been successful.

Please check that the system time of the computer matches the actual time, as this information is passed to the 10EaZy file log for reference.

Connect the supplied microphone to the sound card input and allow for a settle time of at least 30 seconds after power up before starting the program.

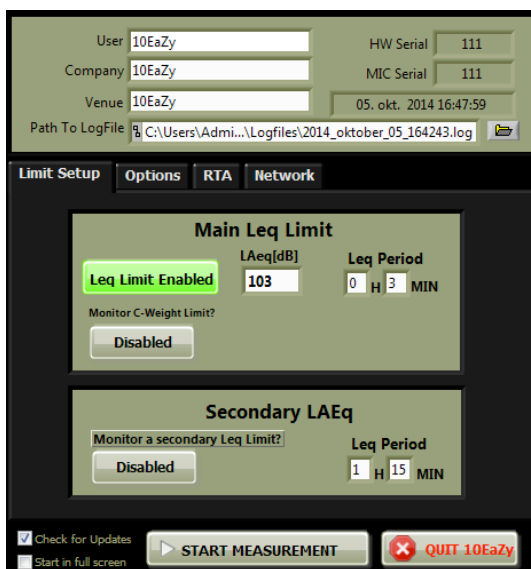
### ***Mounting the microphone***

To ensure precise measurements it is important that the supplied microphone is mounted in a free field, i.e. as far away from reflecting surfaces as possible, and that the microphone is pointing towards the source that is providing the “noise” to be measured. A practical solution might be hanging it from the ceiling. Please consider using the windscreen to protect the fragile membrane from dust and smoke and to add protection to the microphone in the unfortunate case that it should be dropped.

# The user interface

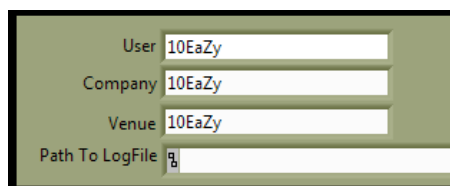
## The Setup Screen

After initial program load has completed you will be greeted by the setup screen. This dialog will only appear the first time you run 10EaZy. If you need to make adjustments to the setup at a later time, please click the 10EaZy logo at the program loading splash screen when you start 10EaZy. All information entered in the setup screen is stored in a file on the current user account. Enabling multiple users of the same computer to have different setups or different user information's – for instance a different venue name or different user name.



### User information

This information is used in the 10EaZy log file. Not all of the values are used in the 10EaZy RT jpeg. Creating a log file is mandatory or 10EaZy won't be able to continue.



We recommend not using removable drives, such as USB sticks, as path to a log file. If the path is too long to be displayed, it is possible to scroll in the text using the keyboard arrows.

### Auto-start feature

Once the fields in the user information have been filled out, 10EaZy will skip the setup screen and start the measurements right away on future program launches. This is very useful in a fixed installation, as putting the 10EaZy shortcut in the Windows™ "start-up" folder will ensure that measurements starts automatically.

# The Setup Screen

## Leq limit setup (Locked when running 10EaZy DIN – Germany only)

The main limit is the LAeq limit – this is the value that will be monitored and logged in all reports

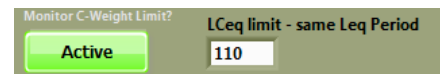
Specify the actual dB limit and Leq period.

Minimum period is 3 minutes. If the Leq limit is disabled, the program will run as a normal logging sound level meter.

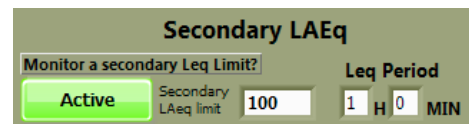


Additionally an option to monitor a LCEq limit with the same measurement is available.

If activated, please set the LCEq limit to monitor, and it will be displayed on the main UI once the program starts.



The secondary Leq period adds the possibility of monitoring and logging an additional user selectable period – this is very useful in countries where a main limit is monitored, and if this limit is violated, an additional extra limit with another value or time period needs to be monitored.



If your system is purchased with the optional DIN 15905-5 feature (only applicable in Germany), the Leq limit setup will be locked to the required fixed 30 minute / 99 dBA average specified by the DIN 15905-5 standard.

## Check for updates:

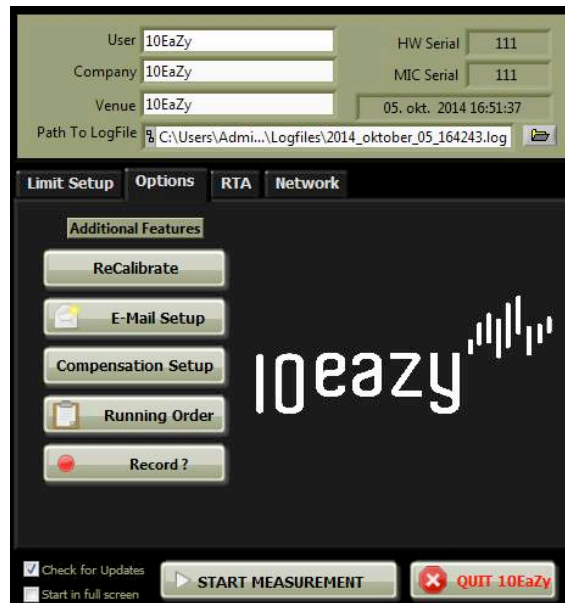
If checked, 10EaZy will look for updates upon program exit, if the computer is connected to the Internet.

## Start in full screen:

If checked, 10EaZy will start in full screen at every program launch.



Press the “OPTIONS” tab to reveal additional features of 10EaZy



Actual available buttons will depend on your 10EaZy version.

## Recalibrate

The “ReCalibrate” button opens a new dialog where it is possible to check the input signal and if required recalibrate the 10EaZy system using a IEC60942 compliant calibrator providing a 1 kHz sine wave – please note that calibration using 250 Hz is not supported. Please check the chapter “Calibrating 10EaZy” for details on calibrating the system.

### Note on calibration

How often the 10EaZy system needs calibration is a matter of local rules and standards. If measurements are to be performed in strict compliance with IEC61672, the system needs to be calibrated with a class I calibrator prior to every measurement.

## E-mail Setup

Enter E-mail addresses to automatically receive a copy of the 10EaZy measurement log file (jpeg image for RT and SW), whenever a user quit 10EaZy.

10EaZy uses a dedicated SMTP server for outgoing mail, so you will receive the log files no matter what network provider 10EaZy connects to.

If no network is available 10EaZy will display an error dialog when trying to send the e-mail to warn of the problem.

## “Compensation Setup”

Pressing this button will open a dialog enabling correction values for the A and C weighted results if needed. This feature might be required if the measurement position is not at a “representable place” in the audience, i.e. if the actual measurement position is located away from the main audience. In this case, running a compensation measurement prior to the event will enable 10EaZy to compensate for the difference in sound level between the main audience area and the actual measurement position during the event, enabling 10EaZy to display a more accurate representation of the actual sound level among the audience. Please read the “using the compensation setup” chapter prior to using this feature.

## Running order (not available with 10EaZy RT and SW)

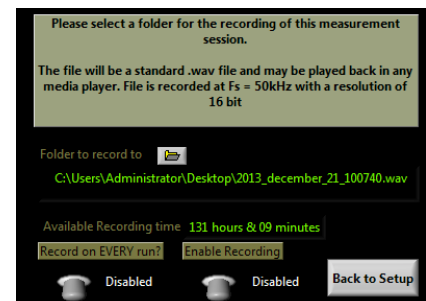
Here you can enter the events that are scheduled during a measurement run. The entries are put in the log file alongside the measurement values. This is a very useful feature because it makes post processing of the log file a whole lot easier. Using the running order is described in details later in this manual.

## Record (not available with 10EaZy RT and SW)

This dialog enables you to point towards a drive to perform a recording of the signal present at the microphone throughout the measurement session. Per default 10EaZy will store the recorded .wav file in the selected logfile folder, and auto name it with the current time.

Two options are available – a single run recording, or to record every measurement from now on “Record on Every Run?”

When a path is selected the time available for recording is displayed.



It is highly recommended to use a high capacity drive if every show is to be recorded as the recording is in uncompressed .wav format to ensure the possibility of post processing and analysis if needed. As such the risk of running out of free space on for instance the system drive is to be considered.

10EaZy will stop the recording during measurement if there is less than 500 MB available space on the selected drive.

As a guideline - An hour of recording will take up approximately 350 MB on the hard drive.

For every 3GB, a new file will be created, as .wav files much larger than that will not work properly.

We recommend using the open source VLC player for playback.

Please note – to avoid the recording to be used as bootlegging material 10EaZy will insert a 2 second gap in the audio approximately every 20 seconds. This is not an error in the recording and in place to protect the copyrighted material if any in the recording.

## **Edit Din15905 Setup**

Only available for DIN systems sold in Germany - pressing this button will open a dialogue containing all required information fields and setup procedures to perform a measurement in accordance with the German DIN15905-5

## **Launch 10EaZy**

Pressing the “Start Measurement” button will close the setup screen and launch the main 10EaZy application.

If a log file was not created an error dialog will appear requesting that a log file is created.

## **Auto-naming feature**

For ease of use 10EaZy has an auto-naming feature of the log file. On the first run after the installation please create a log file manually in a folder of your choice. From then on 10EaZy will remember this path and automatically generate a file name containing the date and time in that folder on every program launch.

If a different file name is desired please click the folder icon and define a different name.

This enables 10EaZy to run without any user interaction, if placed in the windows start up folder.

Doing so will automatically launch 10EaZy once the computer has booted, and we designed the software to “catch” when windows is shutting down, so just press the power button to shut down windows, then 10EaZy will close as well, and send the log file via e-mail if properly configured.

## The Setup Screen - Running order

Pressing the “Running order” button opens a new dialog. (not available with 10EaZy RT)

This is a user defined list of acts or events to play within the expected measurement period.

The entries in the running order will be added to the 10EaZy log file and makes it very easy to distinguish different elements of a show – for instance “support”, “head liner” or the likes.

Simply click the “Add Event” button to enable inputs for band name, start time and duration – once filled out press the “Add” button, and you're good to go. Repeat this procedure for every entry needed.

If you wish to edit the running order click on of the existing entries in the list and either edit or delete the entry.

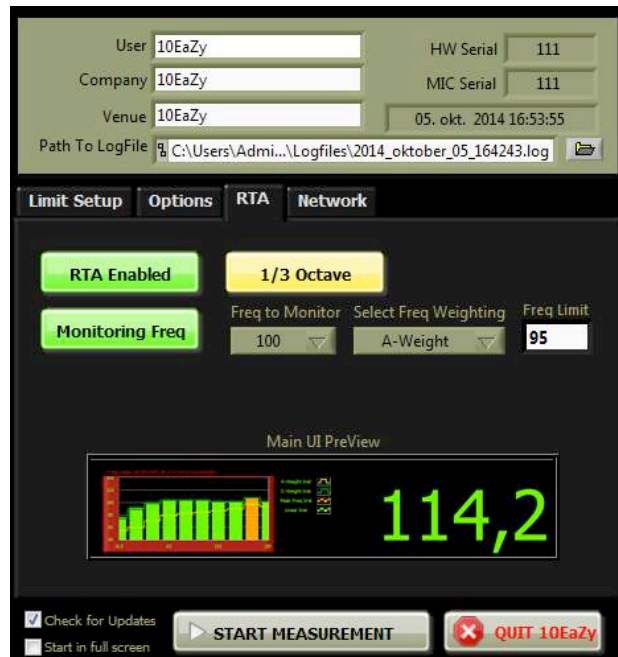
If you are using 10EaZy for continuous shows with the same schedule every day, you may press the “repeat” option in the lower left corner – doing so tells 10EaZy to reuse the running order, and the next time you start the program, the entries will have the same names and start time, but the date will be updated to “today”.

If you need to close 10EaZy in the middle of a measurement and the running order still contains entries that will happen sometime in the future, they will be saved too, and when you restart the program they will still be there. A dialog will inform about this at program start, and if you do not want to “recycle” your entries you will need to erase them manually in the running order window.

It is possible to add / edit and delete entries at the setup screen, and also at the main 10EaZy window while measuring.

## The Setup Screen – RTA option

(not available with 10EaZy RT and SW)



In many regulations today, the maximum SPL allowed at an event is stated as an average Leq limit.

In recent years, especially the electronic dance music scene has been faced with an additional requirement to not exceed a certain dB level for a specific frequency or octave band.

This is mainly done to minimize nuisance to neighbors bothered by the pumping beat of EDM.

Clicking on the RTA tab will give you the option of enabling the 1/1 octave full spectrum or 1/3 octave low frequency spectrum analyzing features introduced in 10EaZy Version 2.5

This tab additionally gives the option to monitor a specific frequency band, if such a limit exists.

You have the option of selecting frequency to monitor, the frequency weighting as well as the actual limit value.

If you enable the RTA features, 3 additional log files will be created for each measurement. Each file contains the LEq 1 min average of the respective frequency bands measured as well as the maximum values in each band on a minute-by-minute basis.

The 3 files represent the 3 frequency weightings monitored, A weight, C weight and Z (LIN) weight. The files will be created automatically, and will be labeled with the same time stamp as the master logfile, as well as located in the same folder for easy reference.

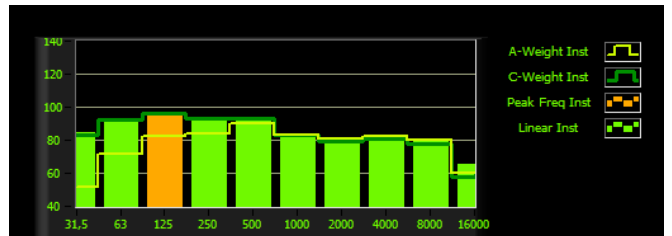
The RTA display on the main UI is enabled by double clicking to the left of the main dB display – moving the mouse over the area will make a sign appear – simply double-click and the RTA display will be enabled.

Single clicking the RTA display will toggle between 4 different time frames:

1. Instant values
2. 1 min Leq average
3. Primary Leq limit average
4. Secondary Leq limit average

Toggling between these displays will not alter the values stored to the log files.

Regardless of the actual display setting, the loudest instant frequency will always be displayed in orange.



RTA display in 1/1 Oct mode -- Loudest frequency at this moment is 125

If a limit is enabled and the octave band monitored is exceeding the value stated, the entire RTA display will turn red to indicate the violation.

Please remember, that the loudest frequency, displayed in orange, might not always be the same as the frequency violating the limit. For instance, you may very well trigger a limit at 63 Hz, while the actual loudest frequency being displayed is 100 Hz.



RTA limit monitoring is on – current value exceeds limit - notice that the actual limit violation is at 1 kHz, while the loudest frequency is at 125 Hz

To turn off the RTA display, simply double click the display.

Pressing the key “f” on the keyboard can also toggle the RTA display.

## The Setup Screen - Network Tab

(not available with 10EaZy RT and SW)

User: 10EaZy HW Serial: 111  
Company: 10EaZy MIC Serial: 111  
Venue: 10EaZy 05. okt. 2014 17:23:30  
Path To LogFile: C:\Users\Administrator\Logfiles\2014\_oktober\_05\_164243.log

Limit Setup Options RTA **Network**

These are more advanced features and are not needed for normal 10EaZy usage

Path To XmlFile: C:\Users\Administrator\log.xml

seconds between update: 3  
A "0" = Xml file write function is disabled updates faster than every 10 sec. is not recommended due to excessive disc I/O

Dynamic file creation?? **INACTIVE**  
When active a new file will be created at each update. The file will be time stamped  
If inactive the same file will be overwritten at each update

Check for Updates  
 Start in full screen

START MEASUREMENT QUIT 10EaZy

Clicking on the Network tab will present you with options to store an .xml file on the computer, that may be used to access measurements in near real time, and enables the user to create any kind of custom displays either locally or via web. The .xml file will contain the majority of values created internally in 10EaZy, and will enable a web-designer to access these values, and create a unique display.

The range of applications are many – one could be a venue that are require to display SPL values to the audience, yet do not want to display a full 10EaZy user interface. Here the web-designer, could create an information system to display the program of the venue or adverts for offerings in the bar, while reading out the SPL value from 10EaZy in the corner of the display. More elaborate systems could also be an option – maybe a festival would prefer to have a command center, to which all stages are displayed in one screen – here the web-designer could make a display combining the input from any number of 10EaZy systems to one total overview.

10EaZy provides the accurate and reliable data, the rest is up to your creativity!

2 modes are available. One is static, meaning that the same file will get updated over and over again; the other is dynamic in which a new file is created each time an update is performed. The dynamic mode will create a massive amount of files, unless the system programmed handles each file and deletes them when done.

Regardless of which mode is used, the update frequency will need to be set – we recommend to update at a maximum each 5 seconds or slower, to avoid choking up the system in reads and writes of the xml file.

The .xml option is disabled by default, and if the “Seconds between update” = 0, the system will not perform any writes to the .xml file – put in other words, the feature is disabled. Click on the “Dynamic file creation ??” button to activate creation of a new time stamped file at each update.

The layout of the .xml file is constant, and each node contains a name a declaration of the actual data type used, as well as a value for this variable.

Here is an example of the Primary Leq value in the .xml file

```
-<DBL>  
<Name>Running Leq(User select) [dBA]</Name>  
<Val>87.42200858602041</Val>  
</DBL>
```

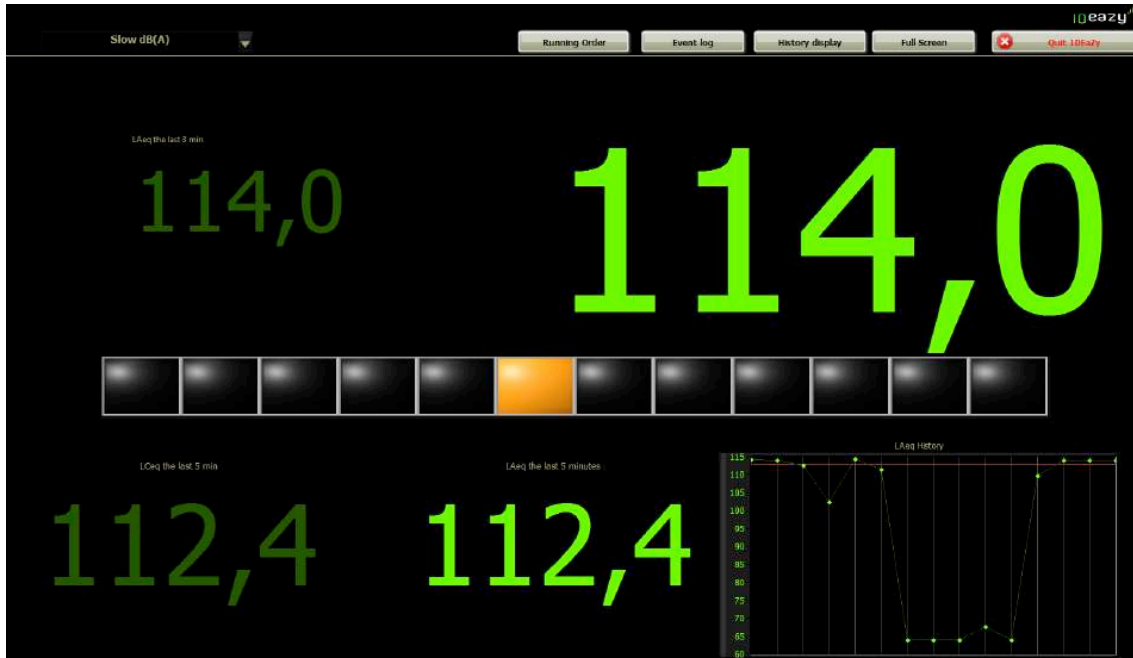
DBL indicates that it is a double precision floating point value.

Name is the internal name from IOEaZy of this variable.

Val is the actual value with all significant digits – we recommend to truncate this value to a more human readable value, like 87,4.



## 10EaZy Main Screen



From top to bottom of the screen the following pages will describe the features of the 10EaZy user interface.

We kindly refer to the appendix of this manual describing dB & Leq measurements in case any of the terms used in this chapter should be unfamiliar.

It is possible to rescale the user interface to any desired size or run it as a full screen solution with no title bars – perfect solution for “kiosk mode” installs.

### TOP ROW BUTTONS:

#### Event log (not available with 10EaZy RT & SW)

Pressing the event log button opens a “notepad” type of window, where the operator may add notes of relevance to the measurement such as loud events not related to the measured show. If there has been entries in the event log it will be stored as a separate file in the same folder and with the same name as the log file plus “\_eventlog” in the file name. For easy access to the event log, you may press “space bar” in any 10EaZy window, to bring the event log to front. In case an input peaks occurs an entry will automatically be made to the event log including a time stamp, even if the event log window is not open.


### Running order (not available with 10EaZy RT & SW)

Pressing the “Running Order” button opens a separate window enabling the user to add or edit entries to the running order during run-time.

### History display

A real time update of key values from the measurements stored to file since program start

### The main display

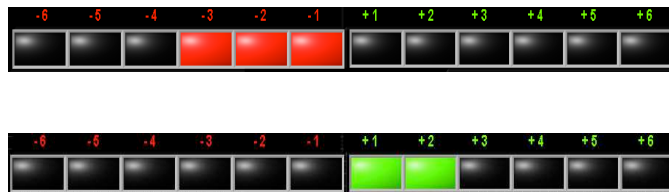
Pressing the  button selects the display mode. Here it is possible to select which measurement results should be displayed on screen. A selection of the most common measurement methods is available.

Changing this display does not affect the results logged to file.

### The MAM

One of 10EaZy’s main features.

This display will constantly update during the measurement indicating in clear green and red, how the average level over a few seconds compares to an “ideal” average based on the dB limit



The MAM is described in details later in this manual.

### Extra Displays – monitoring alternative LAeq and LCeq limits:

10EaZy offers 3 different extra displays.

Pressing the “e” key on the keyboard will open a small but resizable window that is very handy for special applications where for instance two Leq values are required to be monitored at the same time but on separate screens.

The extra display can be moved to a secondary display and provide additional information there.

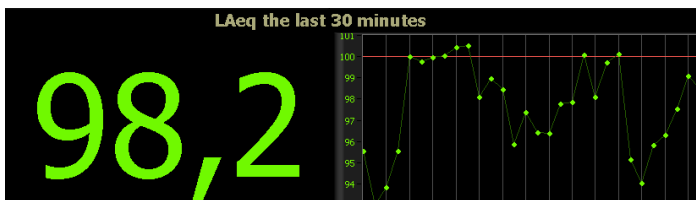
Additionally a display showing a secondary LAeq value with a separate average time and a display showing the LCeq with the same average time as the main limit is available. Simply pass the mouse over the user interface to reveal them. When the display is clicked it will stay on – if clicked again it will disappear.

If the “monitor secondary LAeq” and “monitor LCeq” functions has been selected in the setup screen, the displays will all ready be visible when the program starts.

# 10EaZy Main Screen

## The Leq area

Displays the Leq value with the average period set by the user during setup. Next to the dB value a graph provides a very clear indication of what is in the memory of the Leq value.



The Leq value is the average calculated by the dots on the graph. Every green dot represents a 1-minute average value. The graph is very useful, because it provides the person controlling the sound level with an easy way of knowing if there is “money left in the bank” to increase the average level. The graph will, as a minimum, show 15 minutes of history, i.e. if the Leq period is set to 3 minutes, there will still be 15 dots on the graph.

If the Leq period is set to 30 minutes (as on this image), there will be 30 dots on the graph.

From program start until a full Leq period has passed, the Leq value will be a running average based on the time expired since program start. For a Leq period of 15 minutes this means, that the first 15 minutes after program start the Leq value is based on a running average. This ensures that even in case of a program start right before a concert, if for instance the power has been lost to the computer, an average value is still available at all time.

The Red line indicates the dB limit and provides a very intuitive way of checking how many minutes the short term average has been above / below the dB limit average in the current Leq period.

## The Status Bar

This bar displays system dependent information.



- UnderRange* – Indicates if the level is below the linear range of the 10EaZy hardware
- Current dB Limit* – Displays the dB limit set by the user at the setup screen
- System Information* – Displays band name from the running order + additional system info
- System Time* – Displays the current system date and time

## Input peaks:

10EaZy has a large dynamic headroom, and should be fully capable of handling even the loudest peaks, if used under normal conditions. According to IEC standards the program needs to be reset if an input peak occurs.

This is very unlikely to happen and for normal operation this will usually only happen in case an object hits the microphone or the cable is unplugged during measurements – or if pyro technics are used in proximity of the microphone. If a peak occurs a warning dialog is displayed on the screen. The measurement will continue, but if strict IEC61672 compliance is required, 10EaZy needs to be restarted by the user. In case of an input peak – an entry will be made to the “event log”.

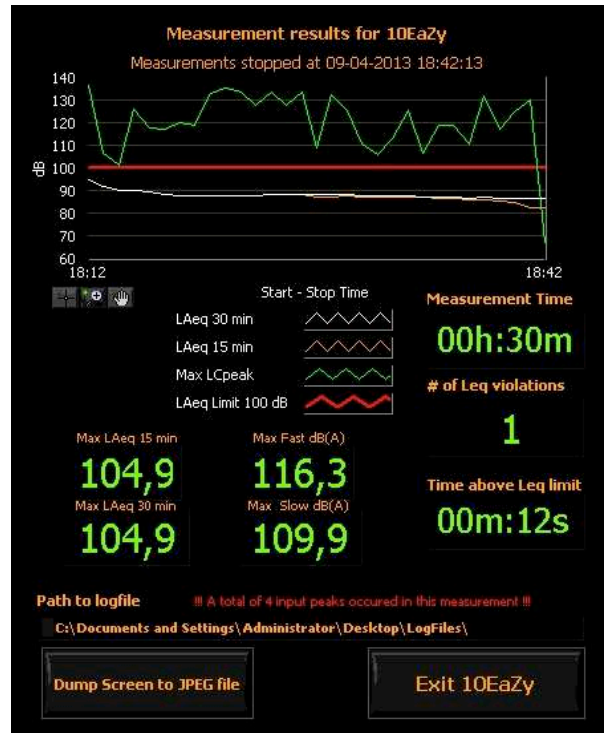
# 10EaZy Main Screen

## Quit 10EaZy

Pressing the “Quit 10EaZy” button will open a dialog asking for confirmation before quitting. If confirmed the measurement will stop and a status screen, similar to the one on the right, will appear displaying key values from the measurement performed.

If an e-mail recipient has been added during the setup screen, this is the time that the e-mail with the resulting log file will be sent.

Pressing the “Dump Screen to JPEG file” will open a file dialog giving the user the option of dumping this screen shot as a JPEG file. To some it might be nice to have a reference file of the measurements, if for instance they are handing over the log files to someone else after the event. This screen will automatically be saved as a jpeg file to the log file folder chosen by the user, so the “dump to jpeg” is only needed if a copy to a specific location, for instance a removeable drive is needed.



For RT users the JPEG will be send via E-mail if address is specified during setup.

A more printer friendly black & white copy is created automatically at the same location as the colored jpeg.

## 10EaZy Main Screen, MAM in depth

One of the main features of 10EaZy is the MAM, an abbreviation of *maximum average manager*.



The MAM takes a short term average, approx. 30 seconds, and compares it to the average stated in the dB limit. If the short-term average is louder than the limit, the red lights will illuminate, if it is below the limit average, the green light will illuminate, indicating how far the current average is from the limit average.

This display only makes sense during music, as the audience noise between songs is most likely to be below the dB limit average. Please note that green lights are not an encouragement to turn up the overall volume during music!

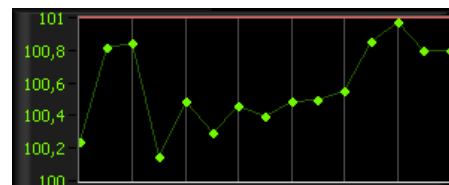
The MAM introduces a whole new level of information to the user. A very common problem when dealing with Leq limits is the start of a show, especially at festivals and other events where a sound check is not performed on the main PA before actual show time. When the band starts to play the sound engineer has no way of knowing if he is too loud or could be louder. With the MAM this problem is solved. Right after show start, the sound engineer will get a clear indication of his average level. He can then go on adjusting the level as appropriate. This completely eliminates the situation known by many sound engineers where they have to make dramatic changes in the overall level half way thru the show because values are turning red.

Two examples to demonstrate the usage of MAM:

### 1) Hip-Hop or DJ act with music featuring little variation in dynamic:

Highly compressed music genres like hip-hop or dance music, typically aims at an “as loud as it gets” philosophy. This means that there will be very little variation in the average level during an entire concert or night of music. Using the MAM, the DJ or sound engineer now have the possibility of adjusting the average level to a point, where the MAM is in zero, indicating that the average level is exactly as loud as the dB limit allows.

Using the MAM this way, removes the need to look at the Leq graph since it will show pretty much the same level all the time, however, it is necessary to keep an eye on the MAM as red lights are not really allowed when maximizing the output this way.



Leq graph showing very little variation in the average level  
(Values between 100 – 101 dB(A))

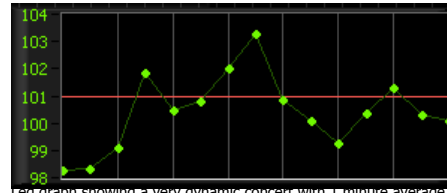


MAM is in zero indicating that the average level matches the average defined by the dB limit

## 10EaZy Main Screen, MAM in depth

### 2) Standard rock / pop concert:

An average rock / pop concert consists of a mixture of loud songs and perhaps a few quiet songs. This kind of music benefits from the 10EaZy user interface in a different way than the previous example. With this kind of music the MAM will occasionally go into red because of intense parts in the music, however there will also be more quiet pieces in the music where the MAM will be in the green +dB area. These color indications in combination with the Leq graph is a very powerful tool for the sound engineer.



Leq graph showing a very dynamic concert with 1 minute average levels both above and below the average dB limit



A quiet part of the Concert. The level is below the average defined by the dB limit. "dB money" is being saved



A loud part of the Concert. The level is above the average defined by the dB limit. Over spending of "dB money"

It is common for the sound engineer to know the band playing and the dynamic development thru a concert. Combining the MAM with the Leq graph he now has the opportunity of mixing the band following the dynamic in the music without the risk of violating the dB limits.

The very intuitive user interface should remove the risk of violating the dB limit. In the unlikely event of people misunderstanding the suggestions given or thru simply ignoring the values displayed, 10EaZy comes with a last line of defense. The warning dialogs.

## 10EaZy Main Screen, The warning dialogs

The warning dialogs are the “final frontier” provided by 10EaZy to avoid violations of the dB limit.

A prediction algorithm is constantly monitoring the recorded measurements and if the average level is approaching the dB limit, a warning is issued. The warning dialog will ask the user to reduce the average level. If a warning is triggered the level has been substantially above the level suggested by the MAM for a while, and it is thus necessary to react swiftly to the suggested reduction to avoid a limit violation.

First warning is a bright yellow text coupled with a change in the color of the Leq value and a yellow triangle. To avoid limitation the operator is required to reduce the level to only have the green squares of the MAM lit. Red squares will add to the overall average and ultimately result in a limit violation. For concerts constantly playing close to the limit, warnings may be triggered continuously.



A flashing warning is triggered – Risk of limit violation if level is not reduced to a level where only green squares are lit.

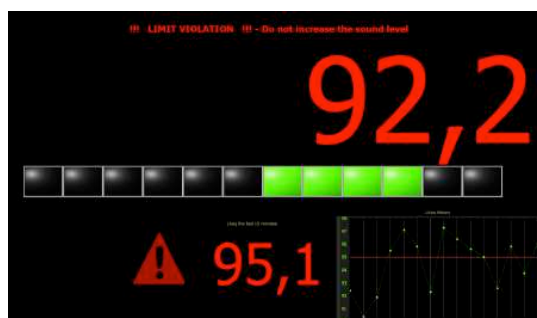
If the warnings are ignored, a limit violation is inevitable.

If this happens the dB values will switch to red and a clear red text will state “Limit Violation”. The duration of the limit violation depends on the level played.

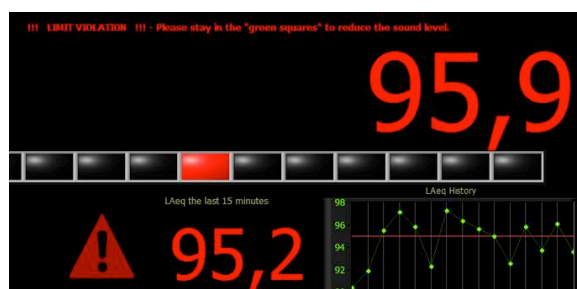
If reduced significantly, the violation will drop quickly. If the level is constantly just around the limit, the violation will last longer. 10EaZy will clearly state whether the current level is adding to the actual violation or aiding in reducing the level to the requested value.



Keeping the sound level below the average level during the period of violation is the only way to get below the limit again, and the period spend over the limit will be directly determined by the sound level at which is played.



If the warning is not followed, a limit violation will occur. A “limit violation” dialog will be displayed and the number will turn red. Please ensure to have only green squares on the MAM to minimize the violation period.



During a limit violation 10EaZy will clearly indicate if the level is currently adding to the violation or if it has been reduced enough to take the level back below the limit. Please keep a close eye on the MAM and stay in the green.

## 10EaZy Main Screen, Limitations

As 10EaZy is not connected directly to the sound system, using 10EaZy is not a guarantee that the dB limit is never violated. However, the very intuitive user interface and ways of letting the sound engineer / DJ know how they are doing, ensures that a violation only occurs if the system is ignored. By providing the person in charge of the sound level with clear and visible information's, the excuse of being too loud because "we didn't know" has been removed. This gives the managers or organizers at clubs, venues and festivals a very powerful tool to demand compliance with dB regulations from their DJ's and sound engineers.

Unfortunately 10EaZy is not capable of seeing into the future. Because of this, the warning dialogs are not available until the program has been running for at least the Leq period of time set by the user. I.e. if the Leq limit is based on a 15-minute average, the program should run at least 15 minutes before the show starts, to ensure that all features of 10EaZy are available to the user.

For longer Leq periods this may be a problem, if for instance the power to the computer is lost and the Leq period is 1 hour. In this case the show may start before a full hour has passed, leaving the engineer without the warning dialogs if he is too loud until the program has been running a full hour.

It is however still be possible to comply with noise regulations, as the MAM provides reliable results 10 seconds after program start and the Leq value will provide a running average until the full Leq period has passed.



# 10EaZy WebViewer and MobileViewer

We have implemented the possibility to remotely viewing a selection of the measurement results in a normal web browser.

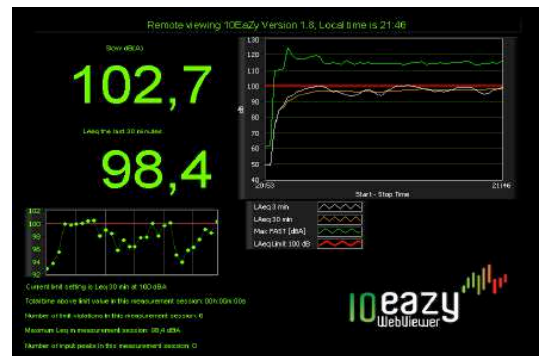
This feature enables tour managers or people at a production office, or even an environmental officer in a remote location, to check a given measurement in real time.

As networks are very different from one another, due to different firewall settings, port forwarding etc, it is very difficult for us to give a “one size fits all” description on how to access the webviewer, so we will just try to explain the fundamentals of what needs to be done.

Please ask your system administrator or seek information on the internet, if any of the topics below appears unclear to you.

Before anything will work you need to allow access to the internet to the 10EaZy program and related services.

Most likely the windows firewall or any other software firewall used will ask for permission to this the first time you run 10EaZy – please allow access on both local and internet if required. (3 programs needs to gain access – 10EaZy, 10EaZy webservice and a program from National Instruments called Datasocket server – cwdss.exe)



## Accessing the WebViewer on a local network (LAN)

The 10EaZy WebViewer function is accessed via any web browser at the address `http://local IP/10EaZy_webviewer.html` and `http://local IP/10EaZy_mobileviewer.html`, where “local ip” is the address of the computer running 10EaZy – for instance `http://192.168.0.12/10EaZy_webviewer.html`

The IP is listed in the windows title bar of the 10EaZy program.

Changes to the computer IP will be reflected at the windows title bar with a delay of maximum 1 minute.

For any other computer or cell phone connected to the same LAN network, typing one of the above addresses with the correct IP will open remote viewing interfaces. Values are updated every 5 seconds to save on bandwidth.

If you are not able to see the interfaces, there is most likely an additional firewall somewhere in your network or even an anti virus program blocking the connection. Start by ping'ing (you don't know what that is? Time for google) the machine from the remote computer to the local machine to make sure that they actually see each other. If this proves successful, try and disable your firewall and anti virus for a limited period of time, to see if they are causing the problem.

## Accessing the WebViewer from an outside line

To access the webviewer from the Internet somewhere outside the local network, there is most likely the need for a forwarding of the port used by the webviewer. For ease of use this port is number 80 – the same port that normal web traffic uses, so it may all ready be forwarded. If you are unsure on how to forward the port we recommend talking to a network expert, or consulting a page like [www.portforward.com](http://www.portforward.com), which host a collection of “how to’s” on a lot of routers.

Furthermore to gain access from the outside of a local network, the IP address needs to be moved from the local network address to the global IP of the outside line – if this IP is unknown to you, it may be obtained from a site like <http://whatismyipaddress.com/>

Please make sure that the port is forwarded all the way thru the network – this means that if your computer running I0EaZy is first connected to a router, and that router is connected to an ADSL modem or the like, the port needs to be forwarded first from the LAN side to the router, and then with the routers WAN side IP thru the modem to the outside world.

## WebViewer advanced notes

If network security prohibits the forwarding of port number 80 another port may be used. Inside the I0EaZy program folder there is a file called niwebserver.conf – inside this file, which may be opened using notepad, the token “listen 80” can be changed to any available port, for instance “listen 32700”.

For users with several systems on the same local network, who wishes to monitor all the systems from a single outside line, each system needs to use a specific port, and then these ports needs to be forwarded thru the routers and modems, as it is only possible for the NAT on the entry router to forward one specific port to one specific IP on the LAN side.

So all systems need to have a unique port, and then have that unique port entered in the niwebserver.conf file for that particularly system.

To access the webviewer from another port than 80, the link need to be updated to the syntax `http://”local ip”:portnumber/I0EaZy_webviewer.html` – for instance `http://192.168.0.12:32700/I0EaZy_webviewer.html`

For most users simply clicking the windows firewall dialogs should be all that it takes to get online with I0EaZy and once successful your web browser should look something like this:

**IOEaZy Features in depth**

# The 10EaZy LogFile

## 10EaZy log File (not available with 10EaZy RT & SW)

10EaZy requires a log file before measurements are started. The log file includes a very thorough documentation of the measured results containing the user information given at the start-up screen, plus various measurement results. It is possible to see the Leq values (both dB(A) and dB(C)) for 1 minute periods, the Leq value for the user selected and the secondary period, the maximum FAST dB(A) and SLOW dB(A) value and the maximum PEAK dB(C) value. Furthermore it is possible to read the Leq C – Leq A value, and the results of an algorithm that estimates audience noise in the measurement. If audience mainly generates the sound pressure, the Leq value is reduced with their contribution to reflect the actual Leq value from the sound system.

These two values are not IEC standards and are only included for statistical reasons.

Data is stored to file once per minute.

The file is compatible with any major spreadsheet application, and it is therefore very easy to import one or more log files to a template and then create report sheets to document the event.

Doing so, a complete database of measurements may be build, and provide useful documentation in case of neighbor complaints or as a general documentation of the sound pressure level at any given day.

If a spreadsheet application is not installed, the files will default to open in notepad. If this behavior is preferred even with a spreadsheet program installed, please simply right click one of the log files and select “open with”, then notepad.

## 10EaZy RT & SW log file

10EaZy requires a path to a storage location before measurements are started. With the RT system the measurement results are delivered as a jpeg file featuring a summary of the most relevant measurement results. The log file jpeg is the same as the exit screen when you quit 10EaZy RT, and if configured at the setup screen will be shipped as an attachment to an e-mail.

## A note on ensuring valid measurement results (not available with 10EaZy RT and SW)

When a measurement is stopped, 10EaZy writes a checksum to the bottom of the log file. When installing 10EaZy, an additional application called LFV, short hand for “Log File Validator”, is installed. This little application may be used to validate the checksum of the file, and thus confirm if the data in the file are the same as recorded by 10EaZy. In case someone altered the data, maybe because they didn't like the results showing they where too loud, the file will fail the check. The checksum is only based on the content of the file, and it is fully allowed to move the file to a different location or rename it. For 10EaZy RT users this is not relevant as the log file is automatically converted to a jpeg file, so cheating would require a rather skilled image manipulator.

## **A note on decimal points**

The 10EaZy log file uses the local decimal point as defined by the regional settings of Windows™.

In some countries this will be a '.' - dot in others a ',' - comma.

Transferring files between different computers may result in problems, when regional settings are not identical.

If data loaded to a spreadsheet file are converted wrongly it will be necessary to either search and replace with the appropriate decimal character or change the setup of the spreadsheets to the correct decimal point.

Both solutions are very simple, and should be documented in the manual supplied with the spreadsheet program.

## **Backup of data:**

To ensure that a valid measurement result is always available 10EaZy will automatically save a backup of the measurement so far. This is done approximately every 5 minute. For class 1 and class 2 systems a complete log file including MD5 checksum and status values are stored , for the RT and SW system a jpeg of the measurements so far will be stored.

In case of a power failure or other "non normal" shut down of the computer, this file will be located in the folder usually assigned to log files for the 10EaZy system. If the program is terminated normally, the temporary files will be deleted to reduce clutter in the log file folder.

## **Installing the 10EaZy sound card driver**

On most systems the driver to the 10EaZy HW should be installed automatically when the software is installed.

Please install the 10EaZy software before connecting the hardware to ensure that the 10EaZy driver has been installed.

When the 10EaZy hardware is connected for the first time, the install hardware driver dialog from windows will show up. Simply select the automatic installation and select yes if asked whether you trust content from "SGAudio".

In case this does not work the driver needs to be installed manually.

If the procedure of installing 3<sup>rd</sup> party drivers is not familiar, please consult your windows user guide on this topic.

As the 10EaZy sound card is unknown to windows the installation will need to be manually done by pointing the "found new hardware" dialog to the appropriate folder. The 10EaZy sound card driver is available in the 10EaZy program folder upon completed install..

## Calibrating 10EaZy

10EaZy is shipped calibrated and ready to use. However recalibration might need to be performed on a regular basis. The interval of this recalibration is determined by local law or common practice, and may vary from never to once every second year or once every day. In order to comply with some standards the system needs to be calibrated at every program run. Additionally some standards require that the calibration needs to be checked again after a measurement. Please use an IEC 60942 class 1 or 2 compliant calibrator providing a 1 kHz pure sine wave at 94 or 114 dB.

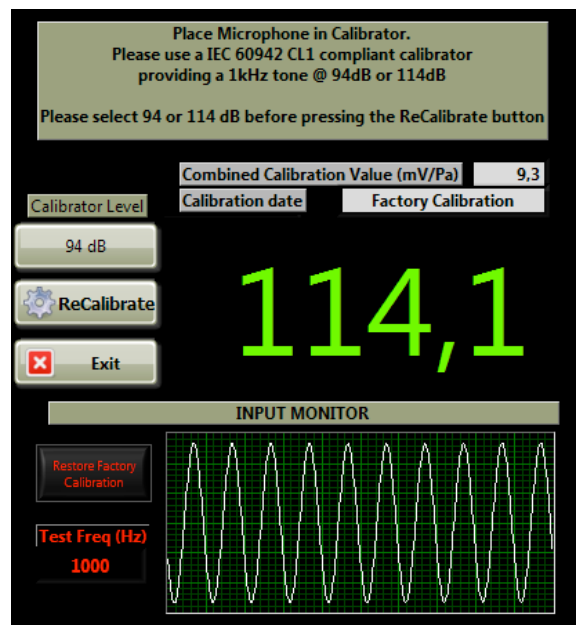
Pressing the “ReCalibrate” button at the setup screen opens the recalibrate dialog. Mount the microphone in the calibrator and turn on the calibrator. Please ensure that the microphone has been inserted completely to ensure a proper calibration. Check the level reading and please ensure that the frequency is stated as being 1000 (+/- 3 Hz), as well as ensure that the scope view displays are steady and clean sine wave.

If the level is outside the tolerances of the required measurement, select the calibration level (94 / 114 dB) then press the “ReCalibrate” button.

10EaZy will recalibrate and store the new calibration value + the date of calibration and use that for future measurements.

A status dialog will indicate the status of the calibration.

Calibration will fail if input is not a 1 kHz tone or if the calibration value differs more than  $\pm 1.5$  dB from the factory calibration.



**NB:** Allow a settle time of at least 30 seconds from connecting the microphone to the sound card, before calibrating the system, to ensure that the measurement chain has reached an equilibrium state.

### **Important info on setting the gain and calibrating IOEaZy SW**

The IOEaZy SW is a software only version, and as such the system needs to be calibrated prior to use with the hardware selected for measuring. Before calibrating it is important to check that the input range of the measurement chain can handle the sound pressure level expected – in live sound this may be in excess of 130 dB LIN.

If the input gain is too high, the signal will distort and create peak conditions and thus ruin the measurement.

Once it is believed that the input gain is low enough that the expected SPL can be handled, calibrate IOEaZy SW using the procedure explained above. Upon completed calibration a very unscientific way of testing if the system is capable of handling high SPL's is to simply pull the plug on the microphone while running IOEaZy – this will create an input peak warning, and if the view is shifted to “peak C hold” then the maximum value measured will be displayed. If this value is in the range of 140 – 145 dB, the system should be capable of handling SPL's around 135 dB. If the value is much higher than this, please consider turning the gain up a bit on the card AND recalibrate the system.

The input range of any given sound card is limited by the resolution of the sampling, and if the gain is too low, lower spl's may not be measured correctly.

Also please be very careful in the selection of hardware to use with a software only solution, be it IOEaZy SW or a competing product. A lot of the cheap measurement microphones may have a linear frequency response at 20c / 50 % RH, but as soon as temperature or humidity changes, they skew their frequency response. Further more many of the capsules are not designed to handle the pressure levels present at a live event. The result is distortion at the capsule or preamp of the microphone, so even if the sound card is not showing an overload condition the complete measurement chain is saturated and not accurate!

We have written a white paper on the topic to help you select proper hardware if you have not opted for a complete and IEC certified IOEaZy package like IOEaZy RT or the Class 1 or 2 solutions.

Please locate it at [www.IOEaZy.com/downloads](http://www.IOEaZy.com/downloads)

## Using the compensation setup

Usually a measurement is required to document the current sound pressure level at a specific point, i.e. in the middle of the audience, sometimes referred to as the “reference point of the measurement”.

For some events and locations, it is not always possible to have the measurement microphone in the middle of the audience, as there is not a convenient or secure place to locate it.

A typical situation could be a theater where this would be among the front rows, and this is off course not a very convenient place to locate the microphone. One could imagine that the actual measurement position would be under the first balcony, along with the mixing console and other tech equipment. In this case, there is a sound level difference between the reference point, and the actual measurement point at the mixing desk.

To ensure that 10EaZy is displaying a value that matches the actual sound pressure level at the reference point it is possible to use the compensation setup, available at the setup screen. In the example of the actual measurement point being below the balcony it would not be uncommon to measure a somewhat lower A-weighted value, as the balcony might block some of the high frequency energy from stage and main loudspeaker hang, but at the same time the presence of close rigid surfaces will create a bass build up, and thus the C-weighted value will actually be higher than that at the reference point.

The compensation setup will enable 10EaZy to compensate for the differences in these levels. This compensation needs to be setup and adjusted prior to opening the venue to the audience.

Two methods are available, compensation and calculation.

Using the *compensation* method, the setup requires the user to place the microphone at the reference point and play pink noise at a “representable level” – this means loud enough that any background noise is not audible, and loud enough that it to some extent represents the full spectra of the sound system used.

Once the pink noise is turned on and the microphone is positioned, press the “measure at loudest point” button. 10EaZy will measure and average the pink noise for a period of approximately 20 seconds. When done, the red indicator next to the button will turn green, and the “measure at actual point” button will be enabled. **WITHOUT CHANGING THE LEVEL OF THE PINK NOISE BEING PLAYED**, move the microphone to the actual measurement position and hit the “measure at actual point” button. 10EaZy will measure for an additional 20 seconds, and then the two displays will change to reflect the actual difference in A and C weighting for the two measurement positions.

Using the *calculation* method is convenient if 10EaZy is used in the same venue time after time, and the configuration of sound system, seating etc. does not change – then the previous measured values may be punched in directly with no need to do additional measurements. This method may also be used if compensation methods has been calculated or measured separately by a consultancy company, and are to be used in accordance with building codes or other demands from local or national authorities.



**Example of values:**

In this example the correction of the A-weighted value is added 2.3 dB, meaning that the displayed and logged values will be 2.3 dB higher, than the measured value at the actual measurement position under the balcony.



This reflects the difference in the level between what is actually measured by 10EaZy, and what 10EaZy would measure if it were located at the reference point. In the same manner the C-weighted value is subtracted 0.6 dB, as the bass build up under the balcony, makes the C-weighted values higher than what would be measured at the reference point in the audience.

Once compensation values has either been measured or calculated please press the “Exit & use compensation” button, and 10EaZy will return to the setup screen.

You will notice that the “compensation setup” button has now turned red, and says “Compensation enabled”.



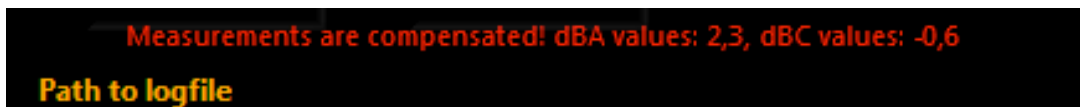
In order to disable the compensation values, please click the, now red, compensation setup button, and select to either keep or delete the compensation values, then click the “exit & disable compensation mode” button.

This will return 10EaZy to normal measurement mode.

If compensation mode is enabled, the system information screen of the 10EaZy main user interface will display a clear message about this.

If compensation mode is enabled all values logged will be compensated, both those displayed on screen and those logged to disk.

For 10EaZy RT, the jpeg logfile will clearly indicate this in red writing above the path to the logfile.



For 10EaZy class 1 and 2, an entry will be made into the top of the logfile displaying both compensation values, and the method used to determine them (measured or calculated)

**Disclaimer:**

Please note that compensation measurements and the method used to obtain them is not a part of the IEC61672 standard. As such, using compensation setup invalidates the strict compliance to IEC61672. However, as the compensation values are fixed, and not changing with frequency or level – they can always be subtracted from a measured value that needs to be evaluated in strict IEC compliance.

## Appendix: dB! A measurement primer

This appendix is meant as a primer to those not familiar with measuring dB and hopefully will serve to remove some of the most common misunderstandings about dB.

We encourage readers to educate themselves on these topics. This appendix only covers the very basic and is not intended to be a scientific white paper explaining all topics in depth.

Very often dB values are used with very little insight. A classic example is the newspaper headline telling the “horrible tale” of an artist who played at 120 dB. As this appendix will show, dB values are of very little use if they don't come with a reference telling what was measured and how. With the increase in small dB measurement devices, like cell phones, a lot of people are measuring dB values these days, but does these values provide any useful information?

First off, dB as such has nothing to do with sound. dB is merely a way of measuring a ratio between two numbers. The dB scale is logarithmic so normal addition and division is not allowed i.e. 100 dB + 100 dB does not equal 200 dB. The logarithmic rules of calculation are different from standard algebra, but non-the-less equally easy to remember. A doubling in the sound pressure level equals 3 dB, so the 100 dB + 100 dB equation actually equals 103 dB. An increment of ten times equals 10 dB, and an increment of a hundred times equals 20 dB.

The measurement unit of sound is “Pascal”. The human auditory system has a very large range at which it operates. The threshold of hearing is defined at 0,0000020 Pa or 20uPa. The threshold of pain is at 20 Pa or a factor of  $10^7$  between the 2 values. The dB value was introduced, as it describes the difference in a more readable way. If the two threshold values are expressed in dB the result will be 120 dB. This just tells that the threshold of pain is 120 dB louder with reference to the threshold of hearing. The reference is important since anything can be expressed in dB. If for instance a festival has 200 participants the first year, and 2000 participants the next year, the crowd has increased 10 times, and thus 10 dB. Again this value is based on a reference of 200 participants. So a dB value with no reference is not really telling anything. For sound the reference is the threshold of hearing at 20uPa. A sound measurement should therefore be expressed as “xx dB ref 20uPa”. But since “everybody” knows that, it always ends up in just being dB.

So now we have established what dB is and what it relates to. But there is more to add to the confusion. dB can be measured in a lot of ways, and depending on how it is done the same source of audio may yield very different results. Three ways of measuring sound pressure levels are commonly used. All three of them yield useful information, but again, with no reference to what was measured and how, they produce very little valuable information.

## Appendix: dB! A measurement primer

The three commonly used measurement methods will be briefly described in the following. For an in depth explanation please consult more detailed literature or the Internet.

### Peak measurements

- Indicates the absolute peak in a measurement. The duration of the peak is not considered and as such tells very little about the actual content of the measurement. However, very loud peaks are known to cause permanent hearing loss (For example gun shots or fireworks at close distance).

### Time weighted measurements

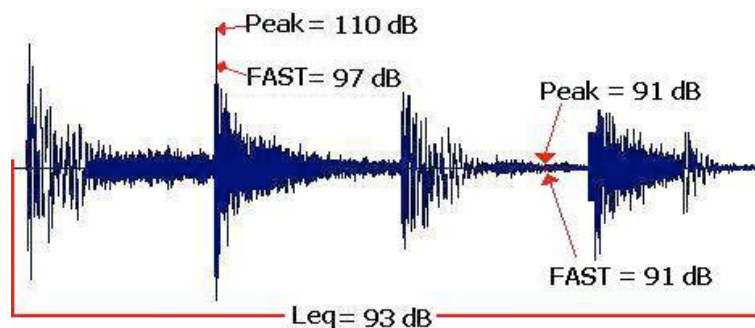
- Usually in sound measurements “time weighting” called F for “Fast” or “S” for “Slow” are used.

Time weighting means, that the measurement is treated with a filter, which does not react instantly to an increment in the sound pressure level. Because of this, a sudden increase in sound pressure will yield a smaller value for a FAST measurement than for a peak measurement.

### Leq measurements

- Leq is shorthand for equivalent level. This value expresses an average sound level based on a period of time, for instance 1 minute or 8 hours. So Leq 8h = 93 dB, means that on average the last 8 hours of measurement was 93 dB. At some periods the level has been louder than 93 dB and at some other periods the level has been below 93 dB. But the total measured level equals a constant noise of 93 dB in 8 hours.

Lets take a simple example, a snare drum. The figure below serves to illustrate the very different dB values one may measure using the three different methods for at the same audio clip.



A final piece of information is missing in the puzzle of measuring audio, and it is called frequency weighting.

---

## Appendix: dB! A measurement primer

The human auditory system is not linear with respect to frequency. Low frequency's and high frequencies are attenuated. The easiest way to describe this phenomenon is by the "loudness" button found on many hi-fi systems. What this button does is to add low and high frequencies to compensate for this attenuation and provide a more pleasing listening experience especially at lower levels.

As the ears sensitivity is reduced at low and high frequencies, this also means that frequencies in that area is less harmful at a given level than for instance a 1kHz tone at the same level.

A frequency weighting is introduced in sound measurements to counter this fact.

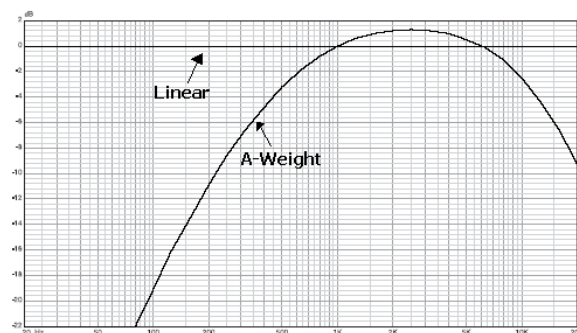
The figure illustrates this weighting called "A-weighting".

Different types of weighting exist, but A-weighting is the most commonly used.

This filter removes a lot of the low and high frequencies from the measurement, to mimic the

sound perceived by the human ear, before calculating the dB value. Doing so gives a more qualitative estimation of the "danger" posed to the ear for a different sound level. If an electric bass is measured with and without the A-weighting, the dB value will be very different, because the A-weight filter attenuates the low frequencies.

If dB values are A-weighted they are marked as "dB(A)" values.



A brief summary:

- dB itself is not a unit like Volt or km, but only indicates a logarithmic ratio between two numbers. If the reference of the dB value is not stated, the dB value provides very little information. For sound level measurements in air the reference is always 20uPa.

"Everybody" knows that, so sound pressure levels are usually just marked with dB or dB(A)

- 3 methods of measuring sound levels are commonly used. Peak, Fast and Leq. As described, it is essential to know which of these was used in a given case, since the values measured on the same signal may be very different depending on the selected method.
- Finally, to simulate the actual sound perceived by the human auditory system, a frequency weighting, usually A-weighting, may be applied to the measurement.

So does the sentence "the concert was played at a 120 dB", give any valuable information? No!

However the sentence "the concert was played at an Leq of 101 dB(A) over 1 hour, with a maximum peak of 120 dB(C)" yields all the information in the world, but of course does not provide a paper selling headline....

And NO!, measuring dB values at a concert using a cell phone do not provide any useful information either.

It is fairly as accurate as yelling to the person next to you to determine whether it is loud or not.